

Exosex® CLTab is designed to enhance a robust monitoring system. Unique to Exosect, the Entostat™ powder technology combined with the clothes moth pheromone, encourages male moths from their harbourage and creates a confusion effect within the lifecycle. This enhances the data from individual monitoring traps. One high reading can pinpoint the source of infestation which can be dealt with accordingly.



Over one whole lifecycle, there will be a reduction in the number of moths caught in monitoring traps. Individual traps may show spikes signifying where there may be “hotspots” of infestation and identifying specific areas for additional treatment.

Mode of action



Exosex CLTab contains Entostat powder formulated with synthetic female pheromone. The increased presence of pheromone attracts male moths into the open.



Male moths are attracted either:
A. to a monitoring trap where they provide an idea of the overall infestation level, or to
B. Exosex CLTab where they pick up powder and female pheromone.



A male carrying Entostat powder will form a mobile pheromone dispenser, producing “false” pheromone trails, which additionally attracts males into the open.



Contact between the males ensures that Entostat powder and the confusion effect is automatically passed on, which attracts further males in to the open.



Royal Opera House benefits from Exosex CLTab

“Although we have always tried to control the population of the clothes moth in the clothes storage areas, visiting theatre groups and ballet companies have left us open to re-infestation.

By using the **Exosex CLTab** system in our clothes moth management programme, we have avoided the need to fumigate which has saved us time and has helped to avoid damage to our stored costumes.”

Corrine Jones-Lord
Head of Costumes and Wigs
Royal Opera House



Contact Exosect
 Tel.: +44 (0) 23 8060 3939
 Email: info@exosect.com

For more information visit:
www.exosect.com

FOR PROFESSIONAL USE ONLY

Exosex CLTab - The environmentally friendly Monitoring Trap Enhancer for Clothes Moth (*Tineola bisselliella*)



Effective - enhances data from monitoring traps

Enduring - works 24:7

Efficient - Safe, continuous, cost effective



Common clothes moth
(*Tineola bisselliella*)

Palm

Wax

Entostat powder

Entostat™ is a food grade powder refined from a natural wax, which is harvested from a particular species of palm tree.

The active ingredient is a species-specific pheromone, which is impregnated into Entostat powder.

Exosex CLTab contains 5 mg Technical Grade Pheromone per gram of food grade wax and poses virtually no hazard to health.

How it works

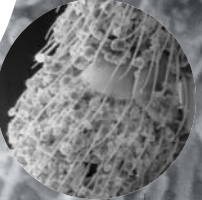
Exosex® CLTab is a Monitoring Trap Enhancer. It uses the male moth to distribute the pheromone impregnated Entostat powder.

Entostat powder is natural technology

An electrostatic charge builds up on an insect cuticle and is generated through the insect's movement (tribo-charging), e.g. the insect walking on a surface or flying through the air. The charge is dependent upon the surface which can be either positive or negative. Entostat powder being bipolar will be attracted strongly to the charged insect cuticle.



Antenna (before contact with Entostat powder)



Antenna (after contact with Entostat powder)

Female moths emit sexual pheromone in order to attract a mate. The pheromone is specific to each species of moth. Male moths sense the pheromone with their antennae. Exosex CLTab uses a synthetic version of the female clothes moth pheromone in order to attract male clothes moth.

Features and benefits

Pesticide free

Designed to fit a proactive pest control programme aimed at long term population reduction

No restrictions on entry or disruption to opening/trading hours

Exosex® CLTab is a unique, **pesticide free**, pheromone based monitoring trap enhancer for clothes moth.

Exosex CLTab is a proven product ensuring the protection of valuable fabrics from artifacts in museums and heritage homes to clothing retailers and home owners.

High safety profile	No restrictions on site entry and no interruption to opening hours.
System works in situ	Does not require the removal of furniture/exhibits avoiding associated upheaval and costs.
Tablets provide 2 months cover	Tablets only need replacing every two months (60 days) which can be easily integrated with a monitoring programme.
Provides continuous activity 24/7	Unlike many direct treatments, that can suffer re-infestation after their application, the Exosex CLTab system releases pheromone around the clock. This is especially useful for heated buildings with a continuous moth lifecycle.
System is discreet	System can be deployed in discreet locations so it does not draw the attention of visitors or detract from the interior decoration.
Deployment kits are re-usable	Once the product has been deployed for the first time, the deployment kit remains in place whilst only the tablets are replaced, saving labour, time and costs of re-application.
Fits with an IPM programme	An invaluable addition to the tools currently available within an IPM programme.
Improves monitoring trap data	Draws hidden moths away from at risk fabrics and into the proximity of a monitoring trap. Once the overall level of infestation is reduced, hotspots can be easily pinpointed by individual monitoring traps allowing the user to focus alternative treatments in a more targeted and efficient way.

Helps pinpoint sources of infestation

A convenient alternative to fogging, nitrogen, carbon dioxide and pyrethrum treatment

Helps protect valuable fabrics in a wide range of situations, environments and locations

For more information visit: www.exosect.com

Exosex CLTab components, assembly and deployment

Components

Exosex CLTab consists of tablets made of compressed Entostat powder containing moth pheromone, and a deployment kit. Exosex CLTab tablets and the deployment kit are packaged separately.

Deployment kit: Pack contains 24 Pheromone Dispensing Units (PDU's).

Tablets: Pack contains 24 tablets.

Also included are instructions for use.



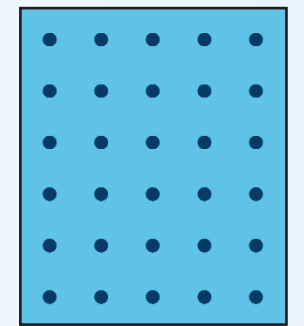
Assembly

1. Remove the backing strip from the adhesive pad and stick the pad firmly to a vertical surface such as a wall. (Please note: The adhesive is quite strong, so during deployment, refrain from attaching to wallpaper for example, but attach to solid substrate like metal, wood or free stand if required.)
2. Take an **Exosex CLTab** tablet and insert it gently and securely in to the hanger. Approximately 50%.

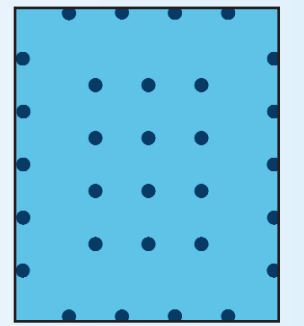
Deployment

- Position in a grid format starting from the edges of the room. Clothes moths are weak flyers and tend to flutter around the source of infestation, therefore, where possible, place the tablets up to 2 metres from the floor. The only time clothes moths fly higher than 2 metres, is when material is present that they can climb such as curtains. In these situations, it may be necessary to place another tablet 5 metres above the first tablet.
- Avoid placing near extreme air movement, i.e. air conditioning, vents, fans or doorways
- Place or increase tablets in areas where there is increased risk of infestation i.e. in rooms already known to harbour infestations

Hypothetical Deployment 5 x 5m



Practical (real) Deployment: 5 - 10m



Practical (real) Deployment: 5 - 10m

