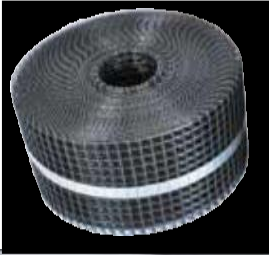
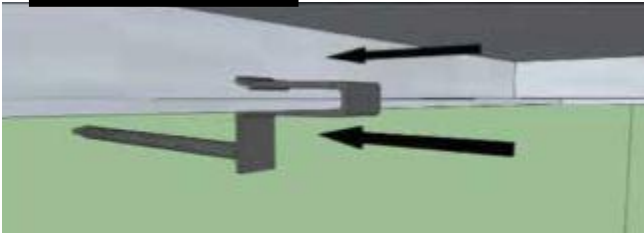


Solar Exclusion Kit Assembly Instructions



- The PVC-coated metal mesh is 8" wide and comes in 50 foot lengths.
- Cut the roll into five-foot sections; it is much easier to work with shorter lengths.
- Using a 5 foot long 2x4 as a guide, bend up two to three squares of the mesh to about a 45 degree angle (see illustrations below). This helps to lock the mesh snugly to the roof.



STEP 1: Place clip every 18 inches. Slide the clip onto the edge of the panel support bracket. Slide as far outward as possible so the clip is all the way on the lip of the panel.



STEP 2: Set the wire mesh screen in place. Make sure the fastener rod comes through the screen at an upward angle as to keep downward pressure on the screen, pushing it towards the roof.



STEP 3: Slide the speed washer onto the shaft of the clip assembly until snug. Make adjustments to the screen as necessary. Tighten speed washer to panel edge. Include a 3" overlap of the mesh when installing the next section.



STEP 4: Cut off any excess mesh screen sticking over the top edge of the solar panel array. Cut off the clip assembly rod flush with the exterior of the speed washer. Use metal shears.



Outer Corner: Cut upwards from the bottom until the bend point. Bend the piece around the corner. Use zip ties, hogrings, or the Solar Clips to hold in place.



Inner Corner: Secure the first mesh panel in place so it butts up against the solar panel. Cut the bottom fold of the second mesh panel at a 45 degree angle so it does not interfere with the bottom bend of the first panel. Lock in place with Solar Panel Clips. Use zip ties if necessary to secure the two mesh panels together.

